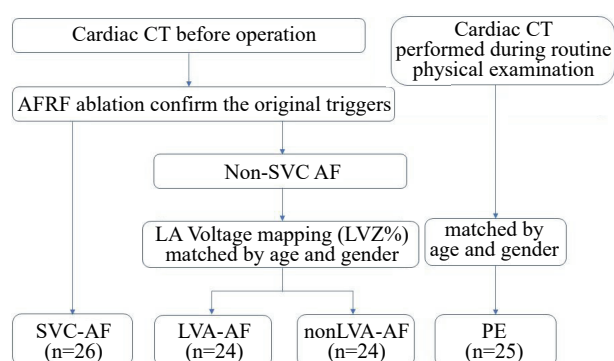


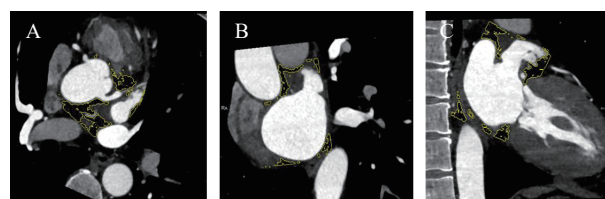
# Epicardial adipose tissue around the superior vena cava: A single center study of factors related to atrial fibrillation

Xingxing Sun<sup>△</sup>, Jun Wang<sup>△</sup>, Qing Yan, Weizhu Ju, Fengxiang Zhang, Gang Yang, Kai Gu, Hailei Liu, Zidun wang, Xiaohong Jiang, Mingfang Li, Di Xu, Yi Xu<sup>✉</sup>, Hongwu Chen<sup>✉</sup>, Minglong Chen

Department of Cardiology, the First Affiliated Hospital of Nanjing Medical University, Nanjing, Jiangsu 210029, China.



**Supplementary Fig. 1** Patient enrollment and disposition flow chart for the study.



**Supplementary Fig. 2** Representative examples of volume measurements of LA-EAT (left atrial epicardial adipose tissue). The EAT volume was semi- automatically calculated in 3 perpendicular planes (A: four-chamber, B: short axial, C: two-chamber) presenting the EAT within the ROI (yellow areas).

<sup>△</sup>These authors contributed equally to this work.

<sup>✉</sup>Corresponding authors: Hongwu Chen and Yi Xu, Department of Cardiology, the First Affiliated Hospital of Nanjing Medical University, 300 Guangzhou Road, Nanjing, Jiangsu 210029, China. Tel: +86-25-83717168, E-mails: [chw2003\\_0\\_79@163.com](mailto:chw2003_0_79@163.com) and [yixu@njmu.edu.cn](mailto:yixu@njmu.edu.cn).

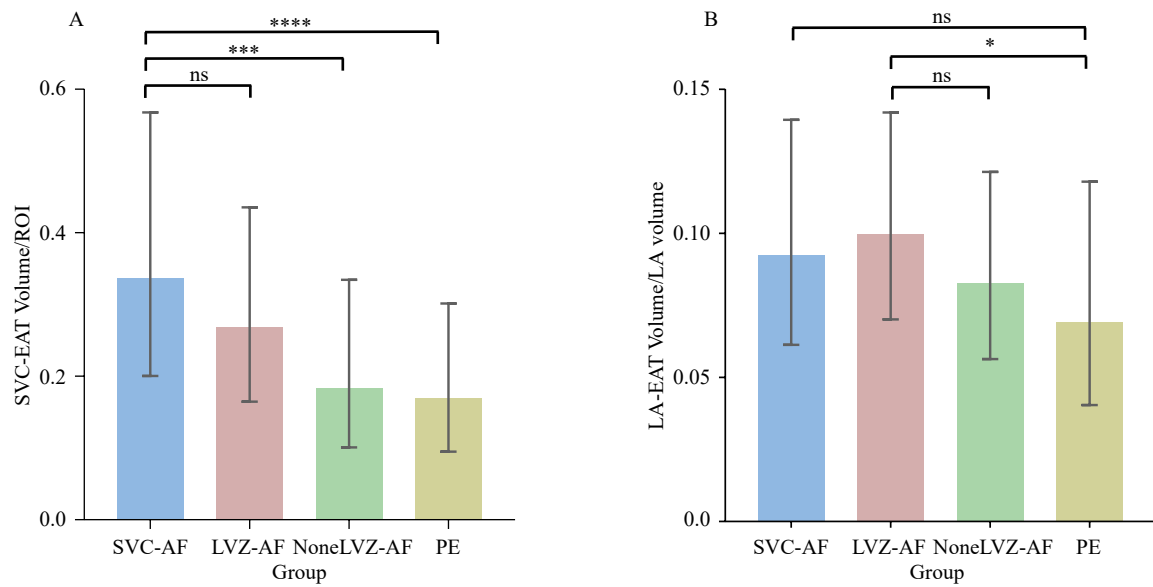
Received: 13 March 2022; Revised: 08 May 2022; Accepted: 13

May 2022; Published online: 20 June 2022

CLC number: R541.75, Document code: A

The authors reported no conflict of interests.

This is an open access article under the Creative Commons Attribution (CC BY 4.0) license, which permits others to distribute, remix, adapt and build upon this work, for commercial use, provided the original work is properly cited.



**Supplementary Fig. 3 Supplemental Imaging variables of each group.** A: SVC-EAT standardized by ROI; B: LA-EAT standardized by LA volume. ROI, region of interest, the mean of the cross-sectional areas of the base of the SVC, and 1 cm, 2 cm and 3 cm above the base of the SVC.